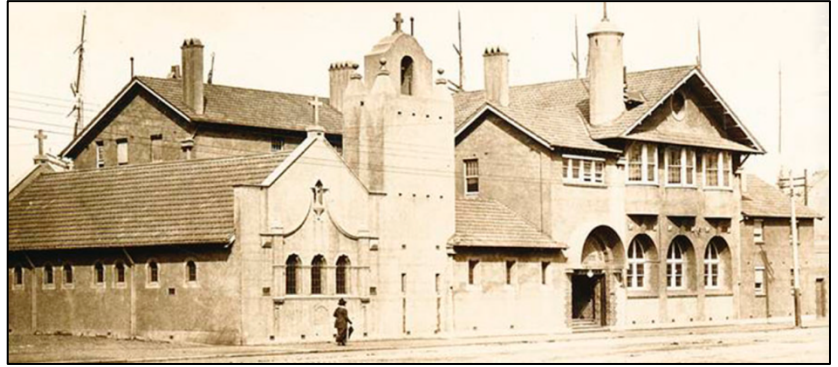


THE MISSION TO SEAFARERS

SEA SUNDAY – Sunday July 12
A day of prayer for the seafarers



Some of you may remember Reverend Inni from the Mission to Seafarers Victoria (MTSV) who came to speak at an HTPM Sunday service a few years ago.

The Mission to Seafarers is an international organisation that provides welfare services to support the tireless work, isolation and hardships faced by the seafarers who connect the world and bring food, fuel and important everyday necessities such as vital medical equipment to our countries and cities – not only throughout the Covid-19 pandemic but every day of the year. There are more than 1.5 million seafarers at sea at any one time to carry over 90% of world trade. Their lives can be isolated and lonely and the conditions they experience are often harsh and dangerous. Added to this, due to the current global restrictions, shore leave for many seafarers is still a way off as are crew change overs. Travel bans and quarantine mean that in some situations there is no way of leaving ships or replacement crews taking over. Many seafarers have been on board their vessels for longer than the 11 months legally stipulated by Maritime Labour Convention of which Australia is a signatory, some for as long as 15 months. This poses very real risks to both their physical and mental health.

During the pandemic Reverend Inni has been kept busy with social media and direct contact with hundreds of seafarers all over the world. The Mission Buildings in Melbourne are at 717 Flinders Street Docklands, and have historical and social significance as tangible evidence of prevailing concerns for the religious, moral, and social welfare of seafarers throughout most of the 19th and 20th centuries.

The first Australian branch was started in 1856 by the Reverend Kerr Johnston, a Church of England clergyman, and operated from a hulk moored in Hobsons Bay; later the Mission occupied buildings in Williamstown and Port Melbourne. The current buildings (dating back almost a century) reflect the diverse role played by the Mission with its chapel, hall and stage, billiards room, reading room, dining room, officers' and crew quarters, chaplain's residence, and gymnasium. The chapel contains many items which have been donated to commemorate seafarers, including stained glass windows, baptismal font, pews and choir stall. The location, size and arrangement of the buildings provide evidence of the volume of shipping and the scale of activity on the docks and wharves of Melbourne throughout much of the 20th century and the support structure created to assist those working in the shipping trade.

Sea Sunday is an opportunity to remember, acknowledge and pray for the work of MTSV. The buildings are fascinating and well worth a visit. It would be great to organise an HTPM tour once it is possible to do so.

Donations to MTSV can be made online at www.missiontoseafarers.com.au/donate or more details on their website.

A MESSAGE FROM NOEL

Some more about the building of St Pauls Cathedral Melbourne in the 1880s.

A new Cathedral was discussed but never proceeded under Bishop Perry. It wasn't until the second bishop arrived - James Moorhouse in 1877, that things got going. He immediately determined that Trinity College would be established and a new Cathedral built on the Flinders Street site. The cost was to be set at 100,000 pounds and the best English architect was to be appointed (much to the chagrin of the local colonial architects). William Butterfield was invited to submit plans in the gothic/revival style.

When they arrived the plans did not fit on the site east-west on Flinders Street, so with some lateral thinking the locals turned the plans around so it was east-west on Swanston Street. The Foundation Stone was laid on 13 April 1880 by the Governor of Victoria.

Money was short and the locals made changes to save money. Butterfield objected and resigned but was encouraged to continue, however as there were more changes in design and Butterfield took nine months to reply to requests and only sent the first set of plans, the contract ended and a new local architect was found - Joseph Reed. Fortunately William Butterfield had supplied an overall plan for the cathedral, so without the specific plans the locals were still able to get it built. The cathedral opened in 1891 close to the original design.



*"Ring the bells that still can ring
Forget your perfect offering
There is a crack in everything
That's how the light gets in..."*

Anthem, Leonard Cohen



Lord God, we entrust to you the families and communities affected by Coronavirus, wherever they may be.

We pray especially for health care workers, that you may guide and protect them.

We pray that your Spirit might inspire those researching new medicines and treatments.

And in the midst of this, keep us strong in faith, hope and love. Grant us the courage and perseverance to be good neighbours.

May the words of your Son Jesus Christ in the Our Father, be our prayer as we entrust ourselves and all of us who are affected to your infinite power and love. Amen.

Adapted from an Ebola prayer by Caritas Guinea

Corona Virus - explained in craft terms.
You and 9 friends are crafting. 1 is using glitter. How many projects have glitter?

When you're allowed to meet up outside in groups of six and you need to ensure the correct social distancing



Editor note: *I want the lilac one at the back!*

PRAYER LIST:

The sick: All people affected by the coronavirus, Eddie J., Carolanne, Duncan, Nerida B., Andrew Davis, Sophie, Anne, Jeanette, Ken B., Nicole, Darren, Margaret B., Marion.

Those in long term need, sickness: Ken P, Peter D.G

The departed: Matthew Pitman (work colleague & friend of Deb's); Erma Tattersall (Jesse's grandmother)

Those who mourn: Pauline, Alex & Jemma Pitman; Jesse and his family

For your prayers:

- Holy Trinity Port Melbourne – for our presence in the local community;
- Noel our priest, Genieve our Bishop, Philip our Archbishop;
- St Paul's Cathedral Melbourne, the Dean and staff;
- Communities throughout the world, as we all manage and deal with the effects of the coronavirus;
- Governments & parliaments throughout the world as each makes decisions regarding isolation restrictions.



HOLY TRINITY'S BANKING DETAILS



Without the opportunity to make financial contributions through the plate at this time, the HTPM community is encouraged to still make regular financial contributions via bank transfers.

Bank account details: Account Name: Holy Trinity Cheque Account (Westpac)

BSB: 033 018

Account Number: 101281

NB. Please add 'Collection Plate' in the Reference section.

[MANY THANKS](#)

*The
parable
of the
sower*



SUNDAY 12 JULY 2020 THE SIXTH SUNDAY AFTER PENTECOST

Readings:

Genesis 25: 19 - 34

Psalms 119: 105 - 112

Romans 8: 1 - 11

Matthew 13: 1 - 9, 18 - 23

HOLY TRINITY ANGLICAN CHURCH PORT MELBOURNE

PO Box 477, Port Melbourne 3207

www.holytrinityportmelb.org.au

Facebook: Holy Trinity Port Melbourne

Priest: The Reverend Noel Whale
Unit 1, 33 - 35 Ligar Street
Sunbury 3429

Home: 9740 3315
Mobile: 0412 196 127
email: jonahnoel@hotmail.com

Newsletter editor:
Lorraine King
lorraine.king@bigpond.com